



75 ROCKEFELLER
PLAZA

ICONIC RETAIL OPPORTUNITY

EATERY 75

EATERY 75

52ND STREET

THE **RETAIL** OPPORTUNITY

PREMISES

MEZZANINE*	3,175 SF
GROUND FLOOR	5,444 SF
LOWER LEVEL	500 SF
TOTAL	9,119 SF

CEILING HEIGHT

MEZZANINE	10'6" – 12'5"
GROUND FLOOR	25'3"

FRONTAGE

WEST 52ND STREET	44'9"
INTERIOR (LOBBY)	61'

POSSESSION

IMMEDIATE

**Mezzanine can be expanded to 4,782 SF*



Flagship position in the heart of Rockefeller Plaza & steps from Fifth Avenue

Located within one block of several world-renowned restaurants including Fig & Olive, Del Frisco's Grille, Limani, and Mastro's Steakhouse among others

Perfectly positioned to attract tourists, shoppers, and surrounding office population

Dramatic physical space with excellent ceiling height

THE REDEVELOPMENT

\$140M+ Redevelopment which includes new office lobby, elevators, mechanical systems & retail facades





44'9"

ICONIC RETAIL OPPORTUNITY

FRONTAGE
W 52ND ST 44'9"
INTERIOR (LOBBY) 61'

CEILING HEIGHT
MEZZANINE 10'6"-12'5"
GROUND FLOOR 25'3"

POSSESSION IMMEDIATE

75
ROCKEFELLER PLAZA

9,119 SF
TOTAL RETAIL SPACE AVAILABLE

44'9"

ICONIC RETAIL OPPORTUNITY

FRONTAGE
W 52ND ST 44'9"
INTERIOR (LOBBY) 61'

CEILING HEIGHT
MEZZANINE 10'6"-12'5"
GROUND FLOOR 25'3"

POSSESSION IMMEDIATE

52ND STREET

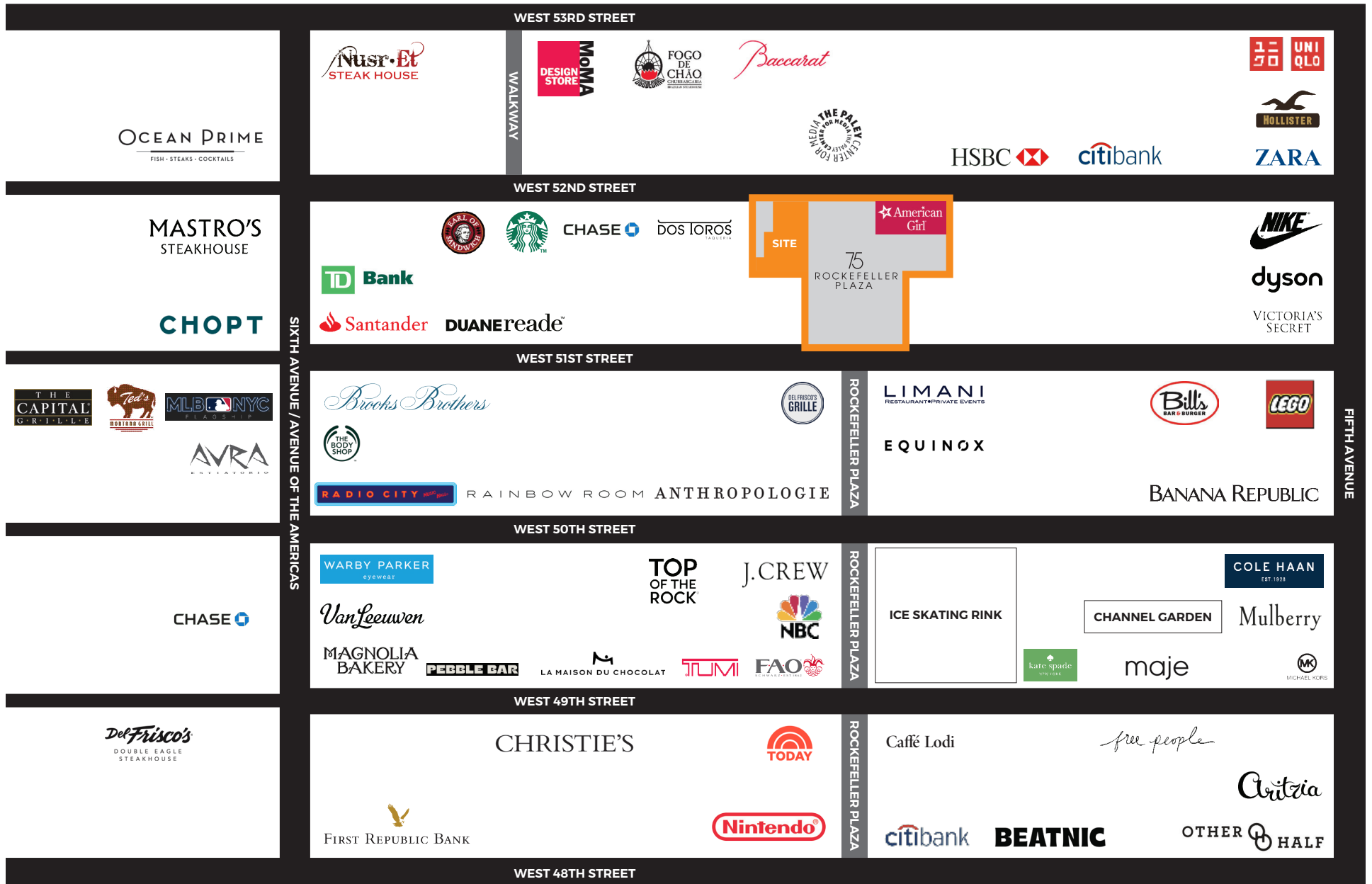
AREA

GLOBAL TOURIST DESTINATION

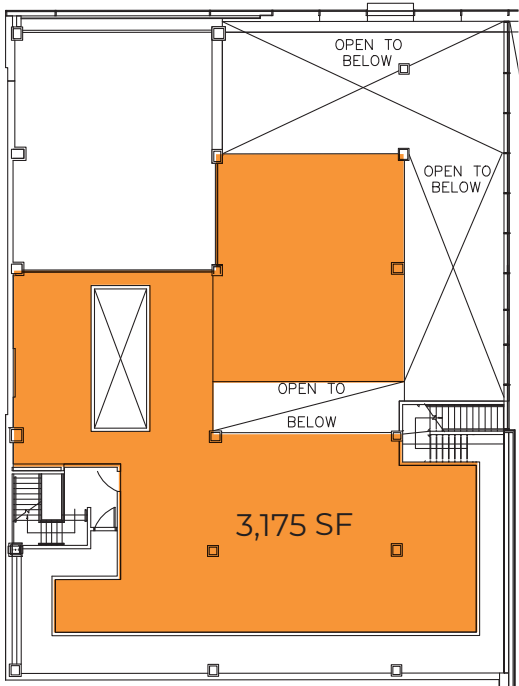
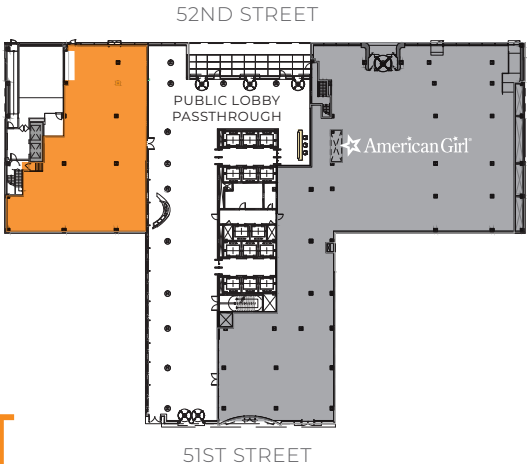
400,000-800,000 visitors daily with highest counts during holiday season

SIGNIFICANT OFFICE POPULATION

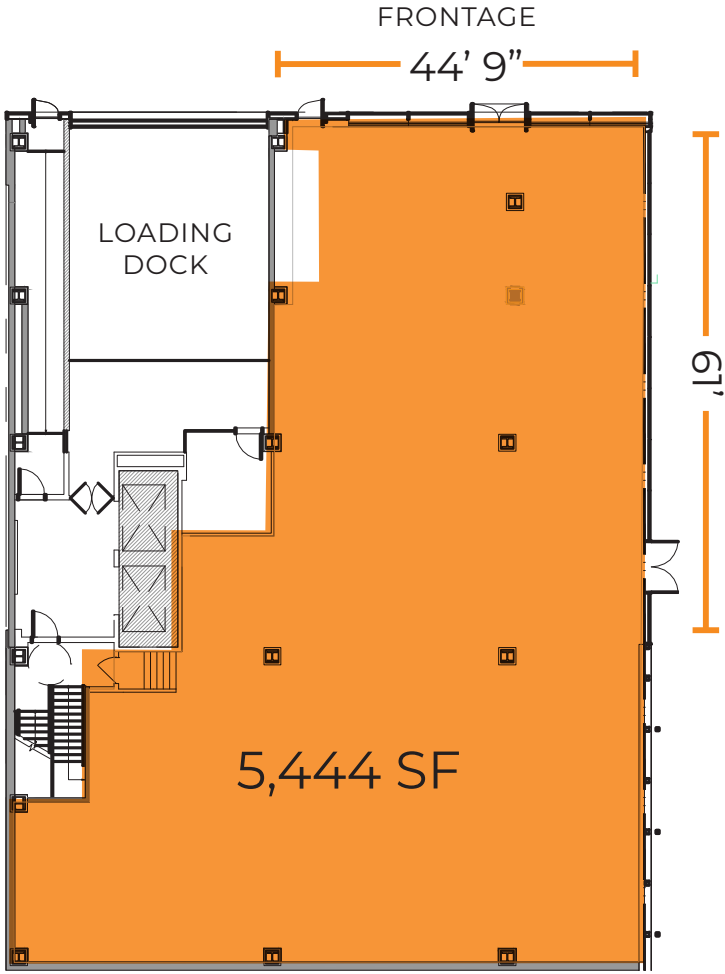
Over 40MM SF in 6th Avenue/Rockefeller Plaza Corridor



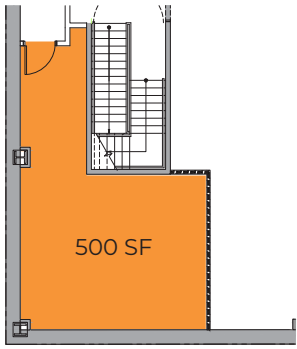
FLOOR PLAN



MEZZANINE

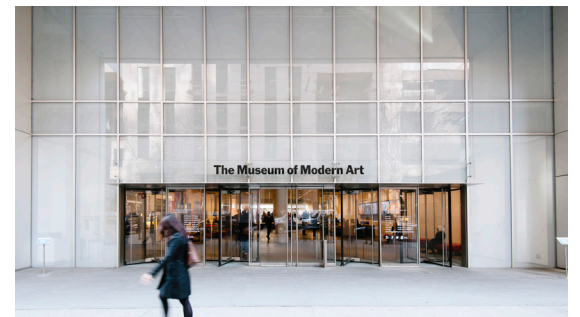


GROUND FLOOR



C1 STORAGE UNIT

IN THE *HEART* OF MIDTOWN



75 ROCKEFELLER PLAZA

FOR AVAILABILITIES PLEASE CONTACT

DANIEL BIRNEY
212.715.6153
dbirney@rxr.com

WALTER ROONEY
212.715.6122
wrooney@rxr.com

HEIDI STEINEGGER
212.444.3792
hsteinegger@rxr.com

RXR

MICHAEL O'NEILL
212.841.7909
Michael.Oneill@cushwake.com

JASON GREENSTONE
212.841.7713
Jason.Greenstone@cushwake.com

TAYLOR REYNOLDS
212.841.5920
Taylor.Reynolds@cushwake.com

