



*Property Video*

SAWYER  PLACE

50 Nepperhan Ave, Yonkers, NY 10701

CONTACT US TODAY **833.259.0200**

**SawyerPlaceNY.com**

 ALLIANCE |  | 



SAWYER  PLACE



# A Yonkers Life A Sawyer Place

---

The Yonkers experience is dynamic, distinctive, and immediately recognizable within the tapestry of New York living—finding a home to mirror that distinction is a top priority for residents of this storied city. Sawyer Place is a reflection of the cultural landscape to which it belongs and connects residents with the area’s natural, tree-rich beauty in ways both restorative and invigorating.

The conveniences associated with urban experience are closely intertwined with the Sawyer Place lifestyle, while nearby parks and waterfront keep a pure sense of nature’s vibrancy close at hand. Our home interiors are modern, our amenities are numerous, and our location perfectly ideal for those drawn to the best dining, shopping, and entertainment in the area. A cosmopolitan practicality cradled within a wooded, waterfront aesthetic - that’s the Sawyer standard.

# Community Amenities

---

- Landscaped Rooftop Terrace
- Sundeck
- BBQ Grills
- Outdoor Movie Projection Screen
- On-site Restaurants & Retail
- Co-working Space
- Indoor Theater
- State of the Art Fitness Center
- Complimentary Coffee Bar
- Resident Lounge
- Game Room
- Billiards Room
- 24/7 Concierge
- On-site Valet Parking
- Controlled Access
- On-site Storage
- 24/7 Package Receiving
- On-Site Management & Maintenance





# In Your Home

---

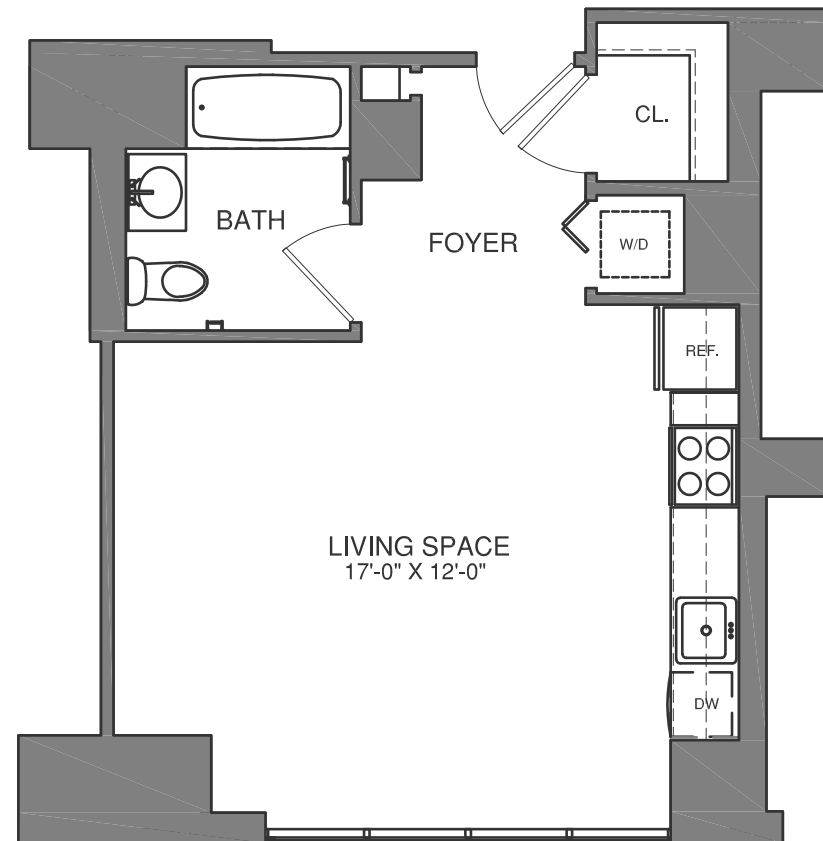
- Studios, One-, Two- and Three-Bedroom Residences
- 477-1,276 Square Foot Layouts
- Fully Equipped Kitchens with Stainless Steel Kitchen Appliance Package
- In-Home Washers and Dryers
- Stunning views of the Hudson River, Palisades Cliffs, Manhattan Skyline and Van Der Donck Park
- 5-Burner Gas Cooktops with Griddle
- Floor to Ceiling Windows with Roller Shades
- Keyless Entry with Latch Technology

*\*Available in all one-, two- and three-bedroom units, with option to add in studios.*

# Neighborhood & Transit Features

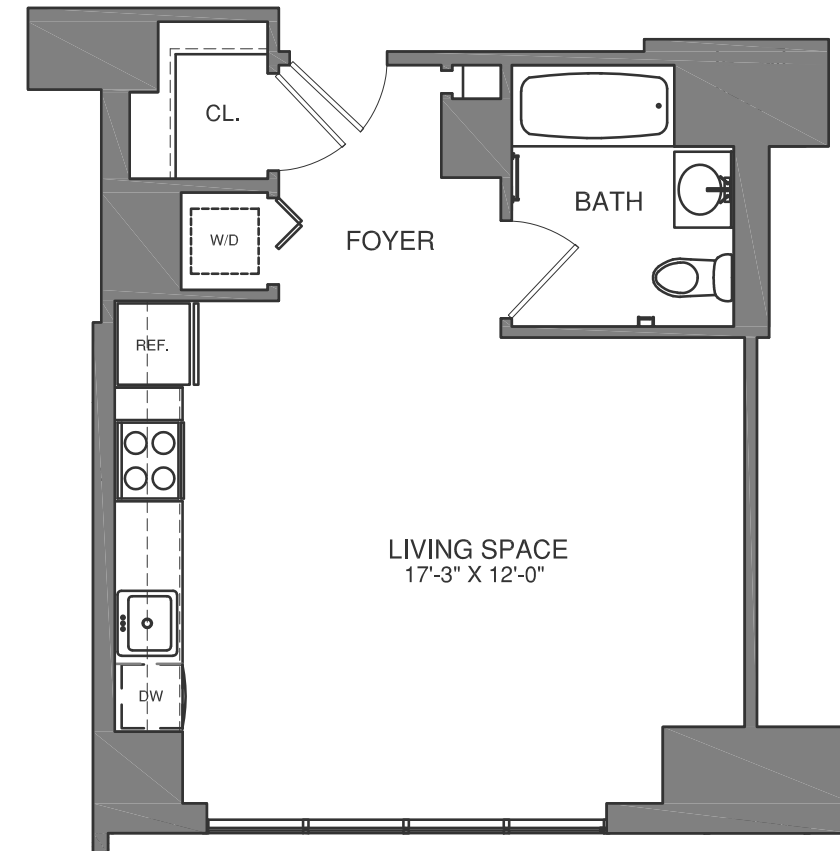
---

- 25-minute Commute to Manhattan
- Next Door to Van Der Donck Park
- On-Site Restaurants and Retail along the Park and on Main Street
- Near Yonkers Station Serving Amtrak and Metro-North Trains
- 20+ Bee Line Bus Routes within 5-Minute Walk
- 20 Miles from Westchester County Airport



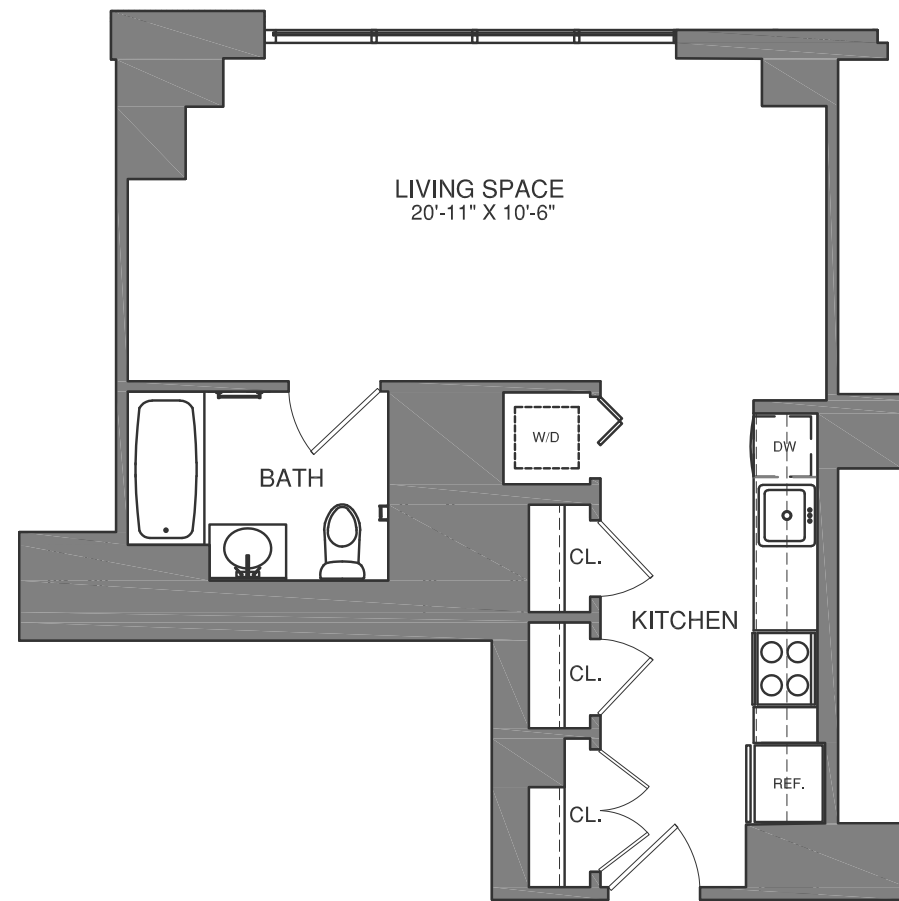
## S1

0 - bedroom | 1 - bath  
472 - 473 sq. ft.\*



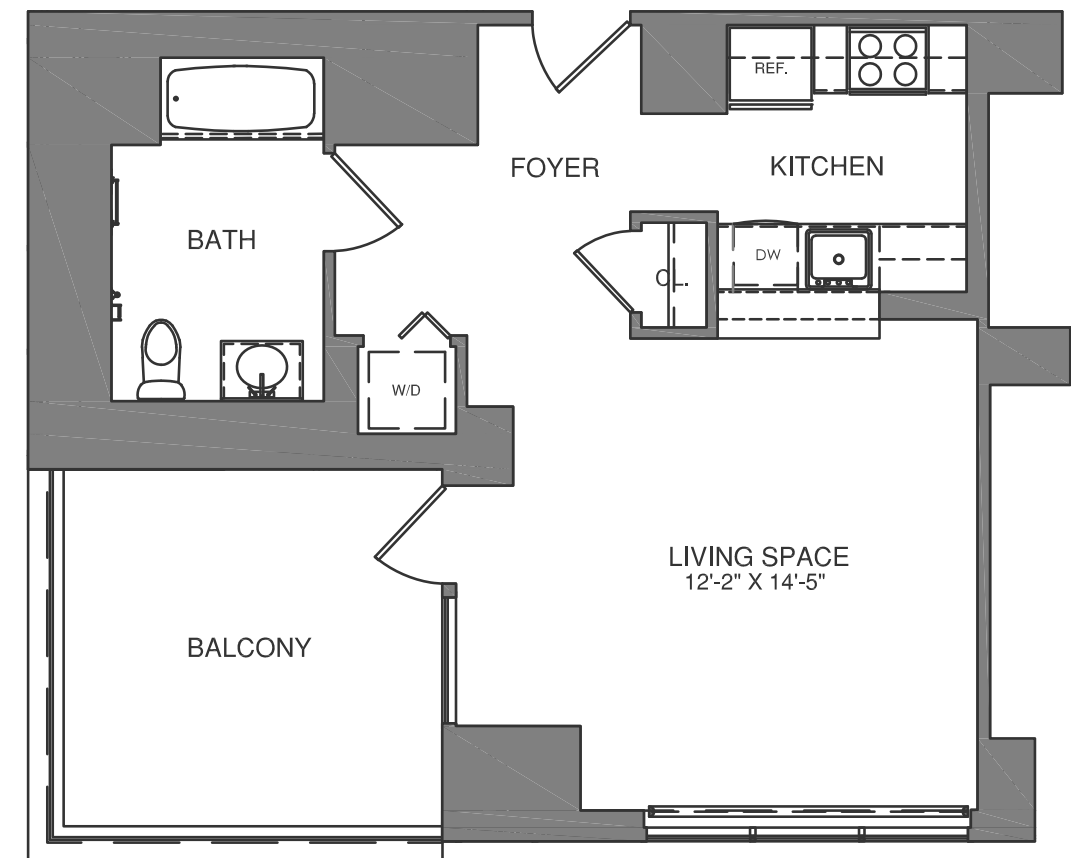
## S2

0 - bedroom | 1 - bath  
479 sq. ft.\*



## S3

0 - bedroom | 1 - bath  
543 - 545 sq. ft.\*

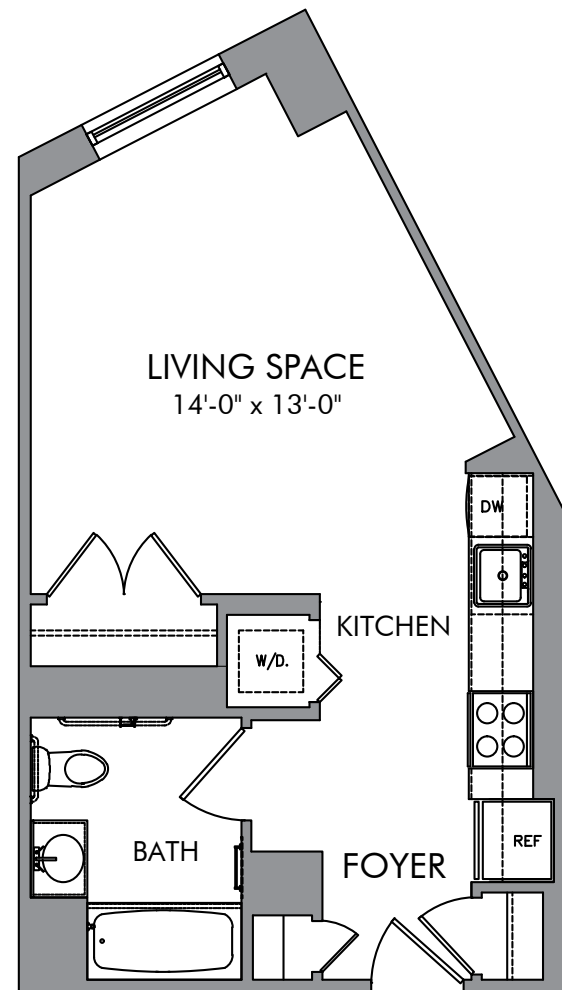


## S4

0 - bedroom | 1 - bath  
585 sq. ft.\*

# Studio

\*all square footage is approximate



**S5**

0 - bedroom | 1 - bath  
477 sq. ft.\*



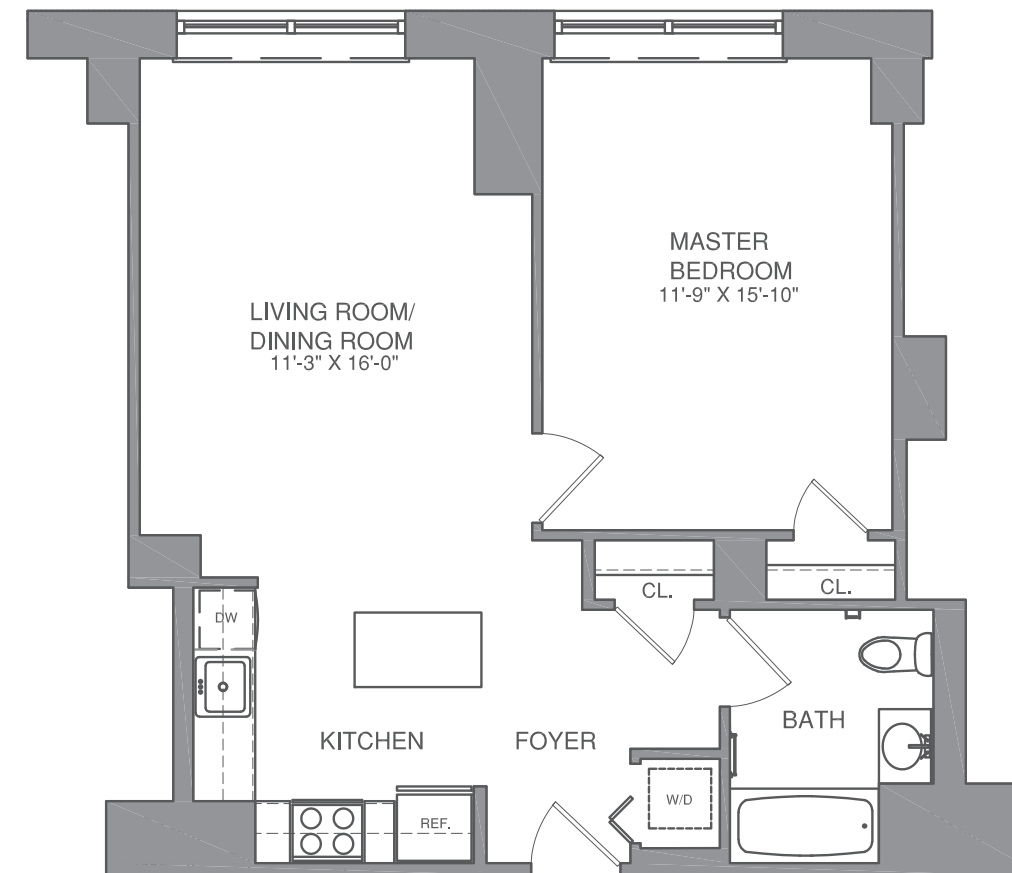
# 1 Bedroom

\*all square footage is approximate



**A1**

1 - bedroom | 1 - bath  
720 sq. ft.\*



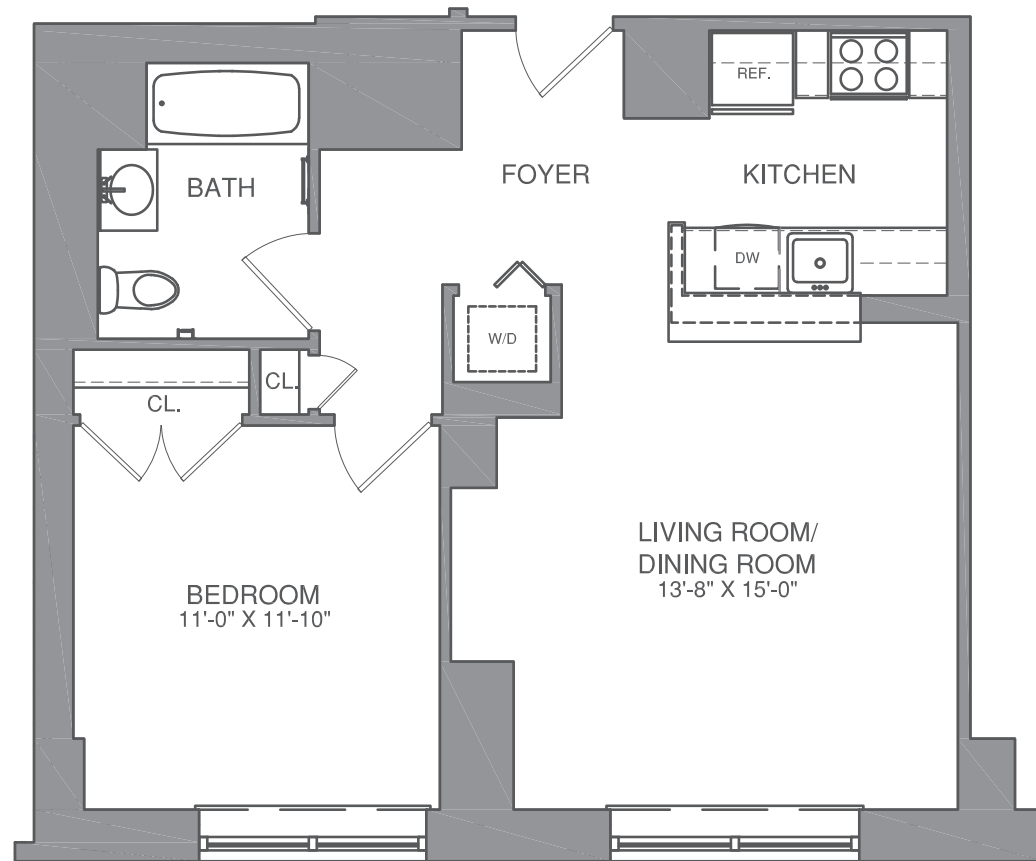
**A2**

1 - bedroom | 1 - bath  
737 sq. ft.\*



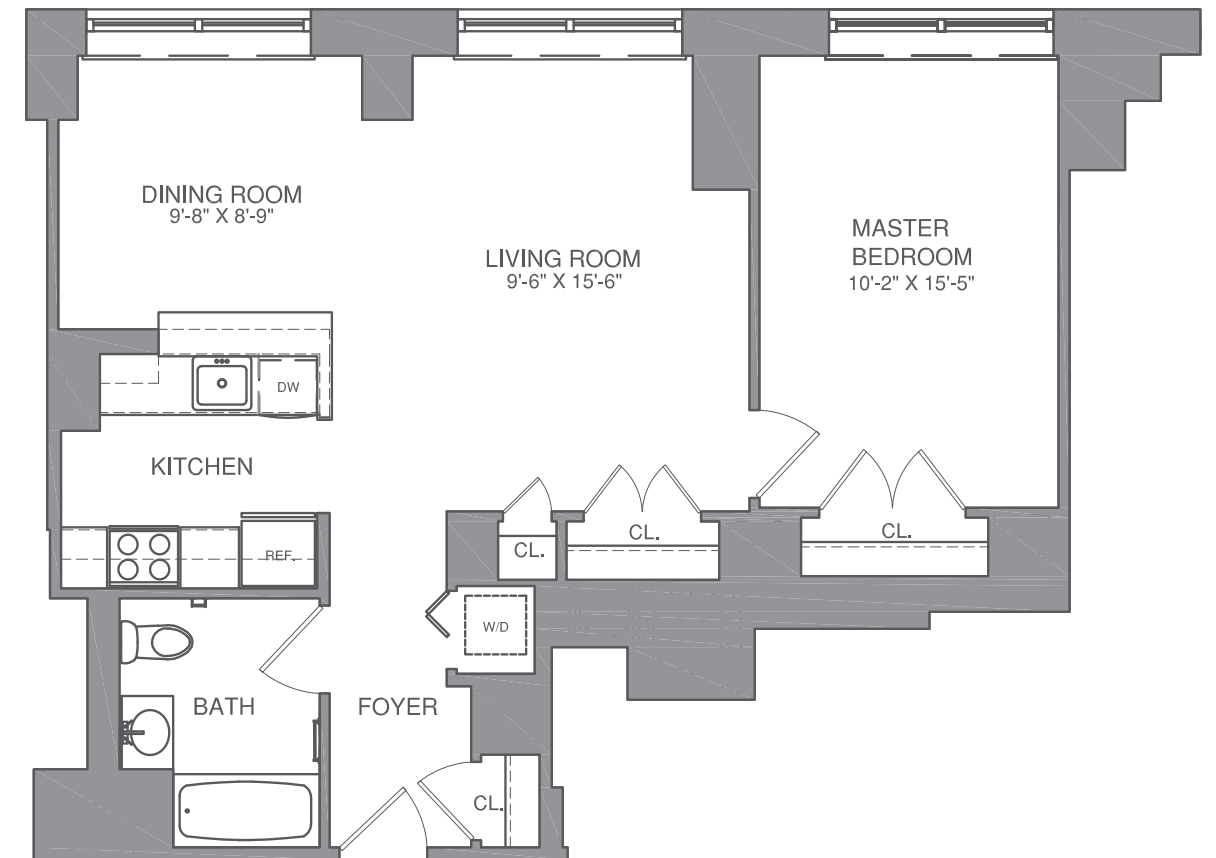
# 1 Bedroom

\*all square footage is approximate



**A3**

1 - bedroom | 1 - bath  
747 sq. ft.\*



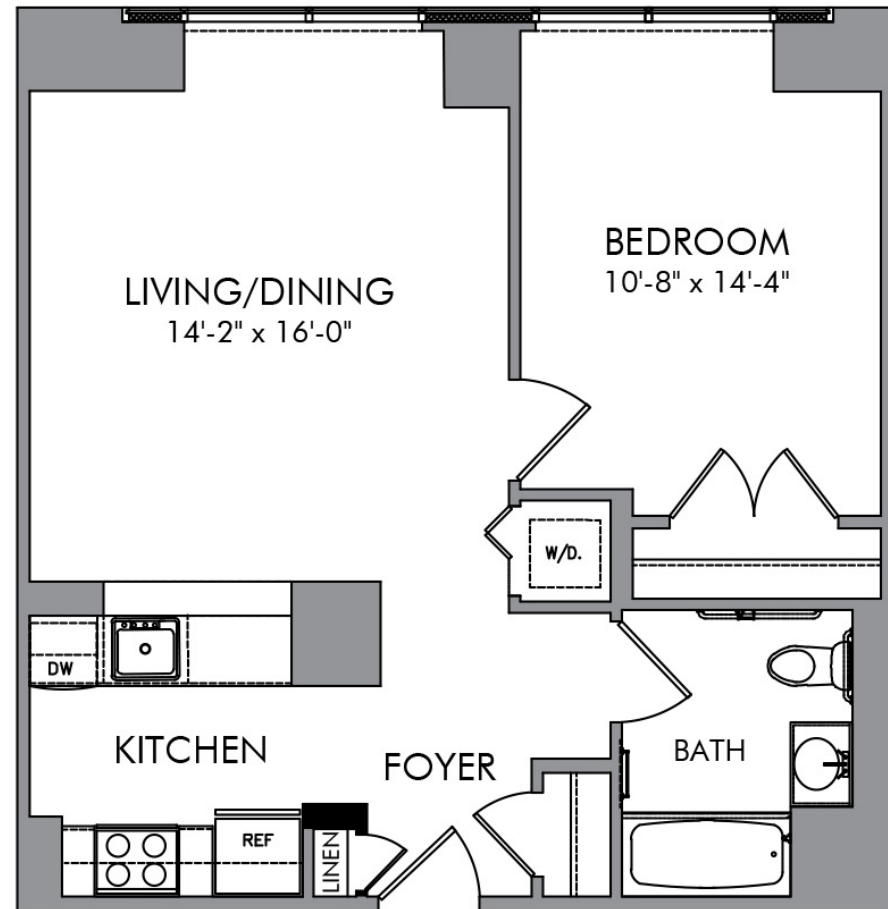
**A4**

1 - bedroom | 1 - bath  
822 sq. ft.\*



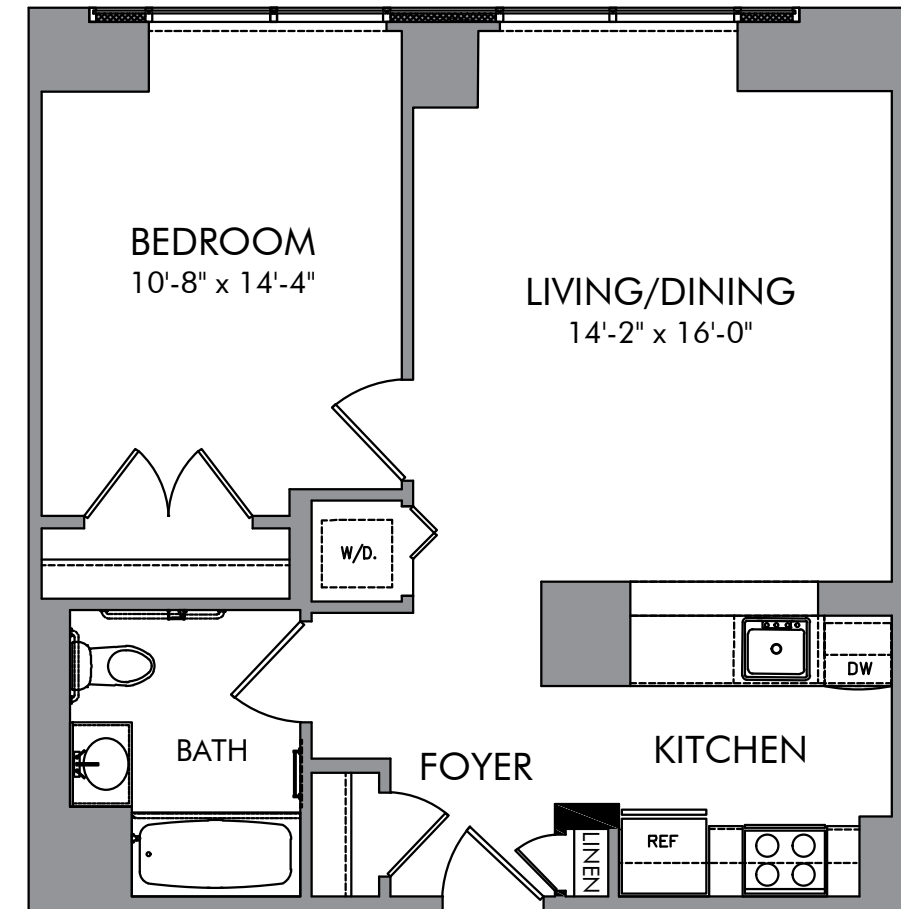
# 1 Bedroom

\*all square footage is approximate



**A5**

1 - bedroom | 1 - bath  
664 sq. ft.\*

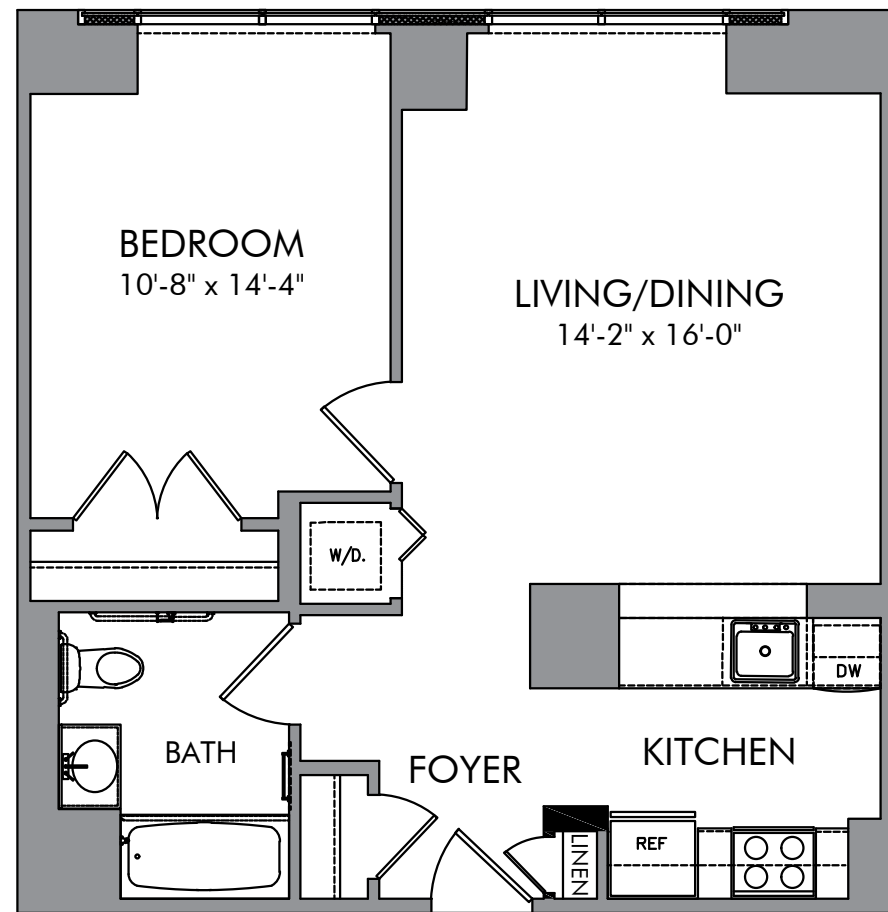


**A6**

1 - bedroom | 1 - bath  
678 sq. ft.\*

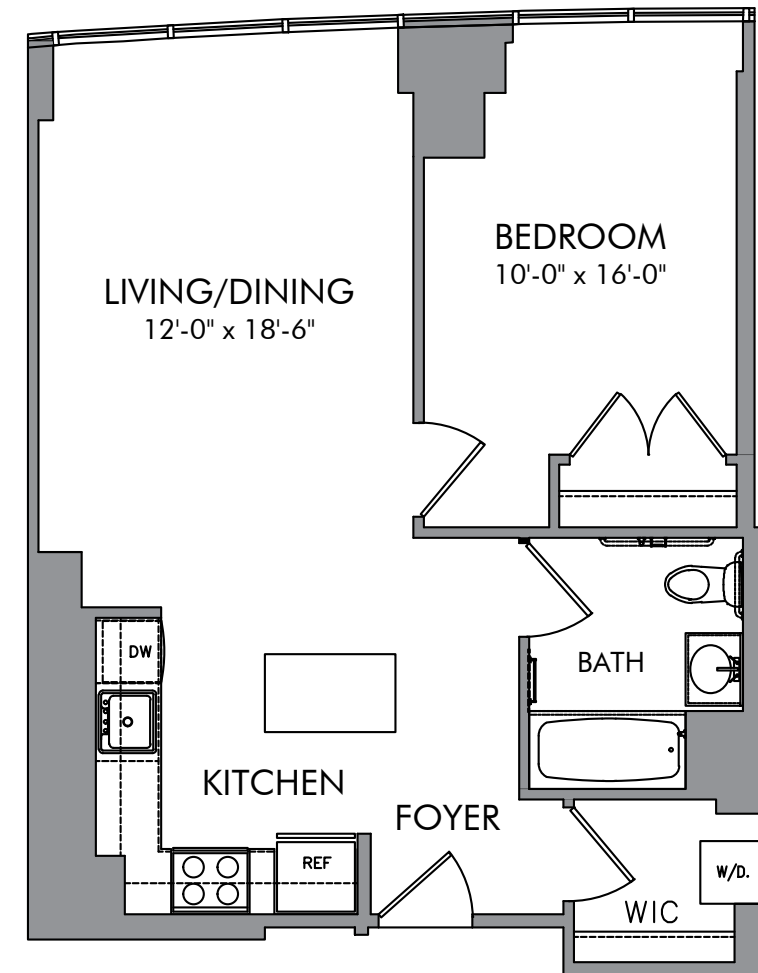
# 1 Bedroom

\*all square footage is approximate



**A7**

1 - bedroom | 1 - bath  
658 sq. ft.\*

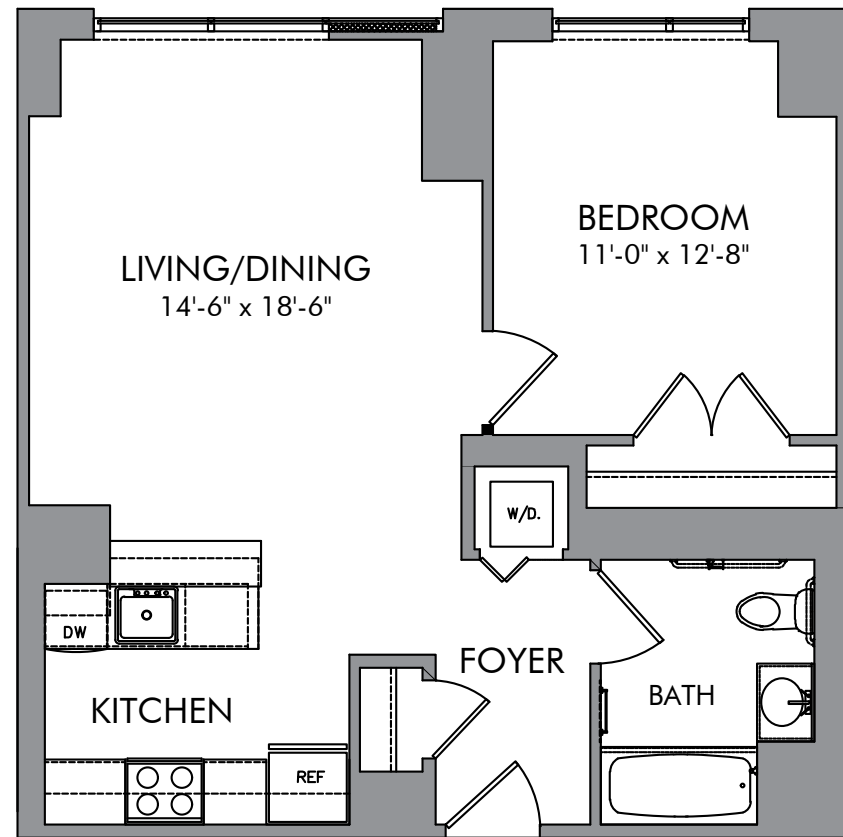


**A8**

1 - bedroom | 1 - bath  
663 sq. ft.\*

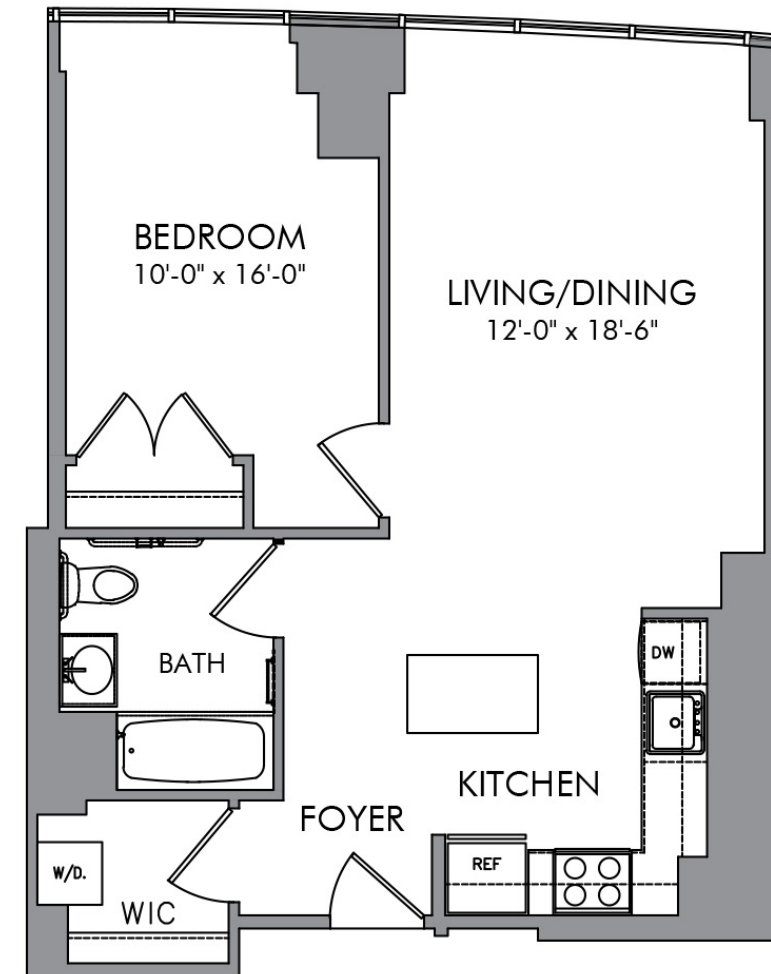
# 1 Bedroom

\*all square footage is approximate



**A9**

1 - bedroom | 1 - bath  
679 sq. ft.\*

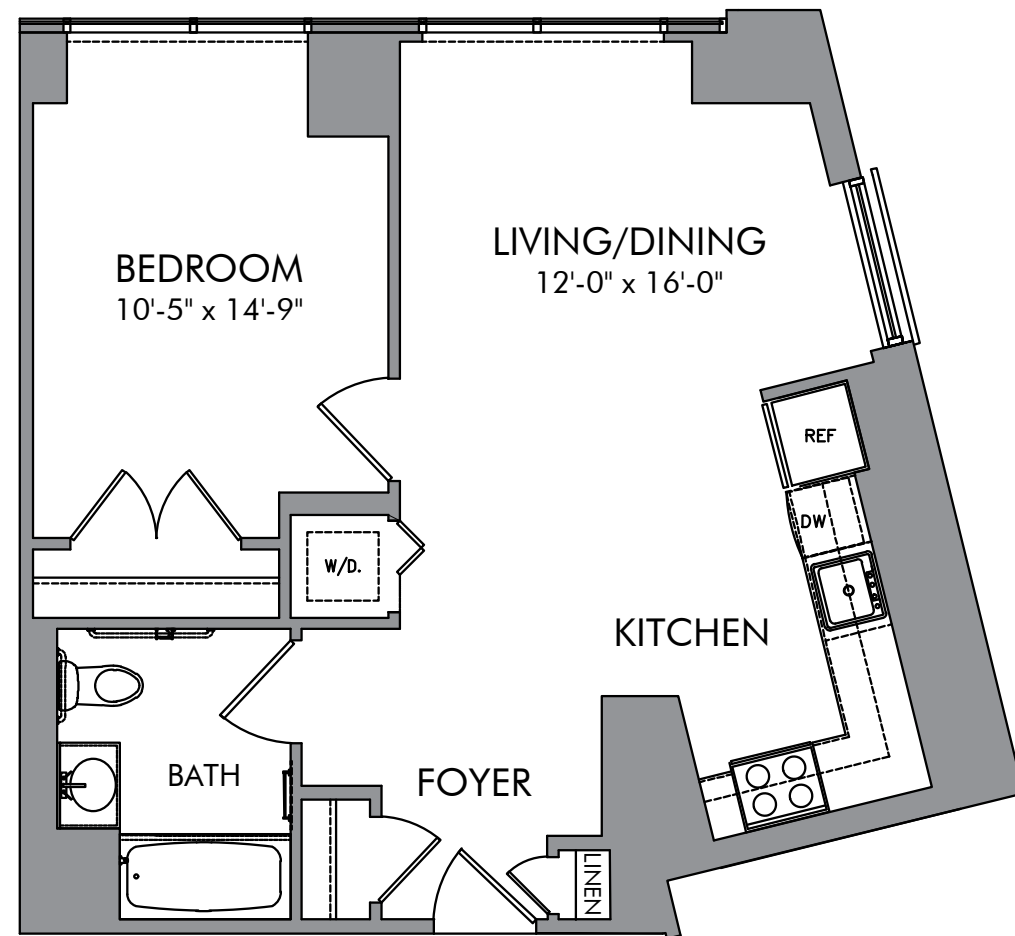


**A10**

1 - bedroom | 1 - bath  
691 sq. ft.\*

# 1 Bedroom

\*all square footage is approximate



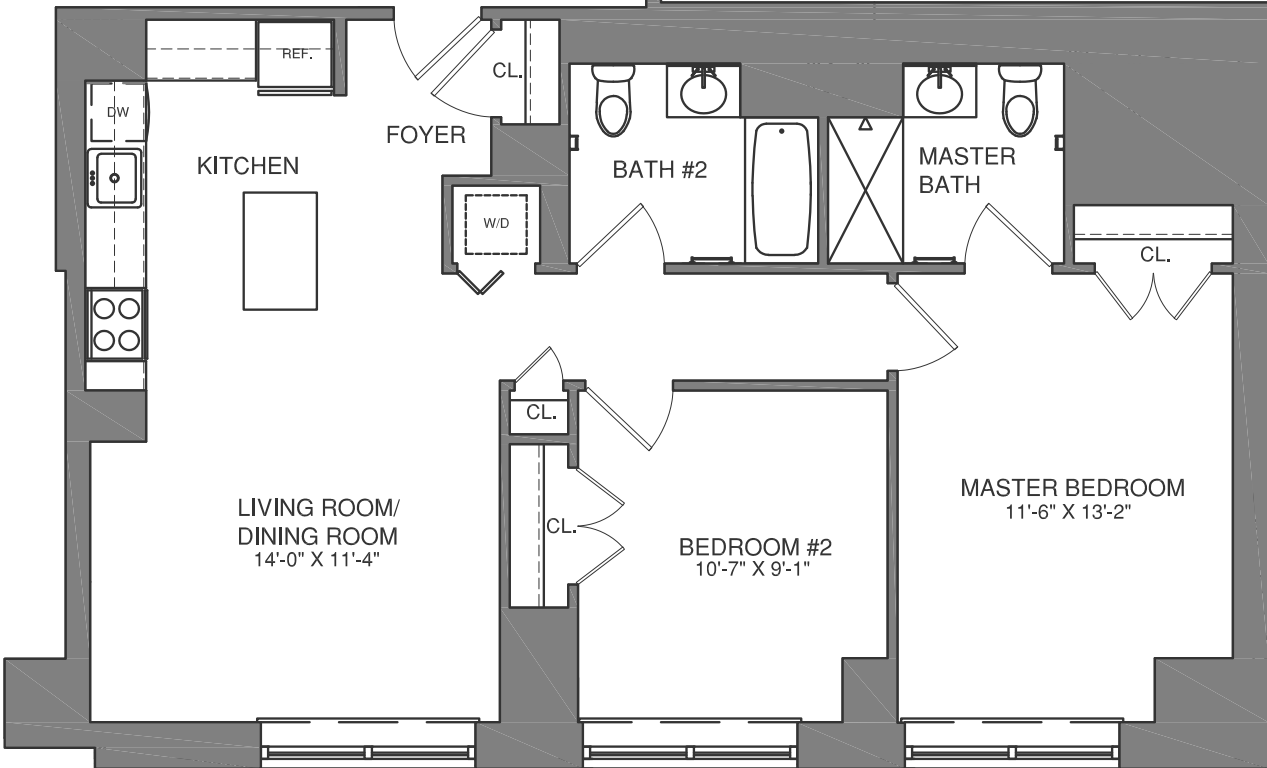
## A11

1 - bedroom | 1 - bath  
693 sq. ft.\*



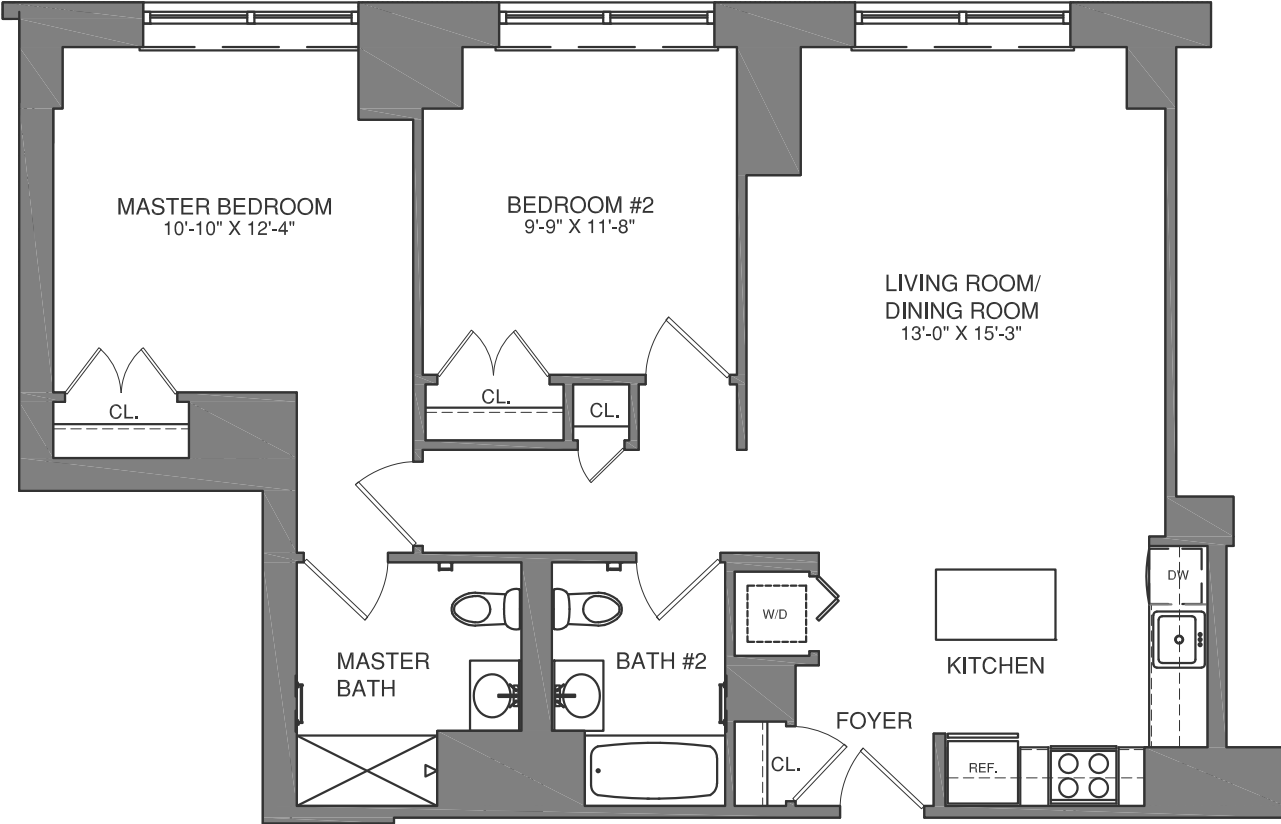
# 2 Bedroom

\*all square footage is approximate



## B1

2 - bedroom | 2 - bath  
1,048 - 1,064 sq. ft.\*

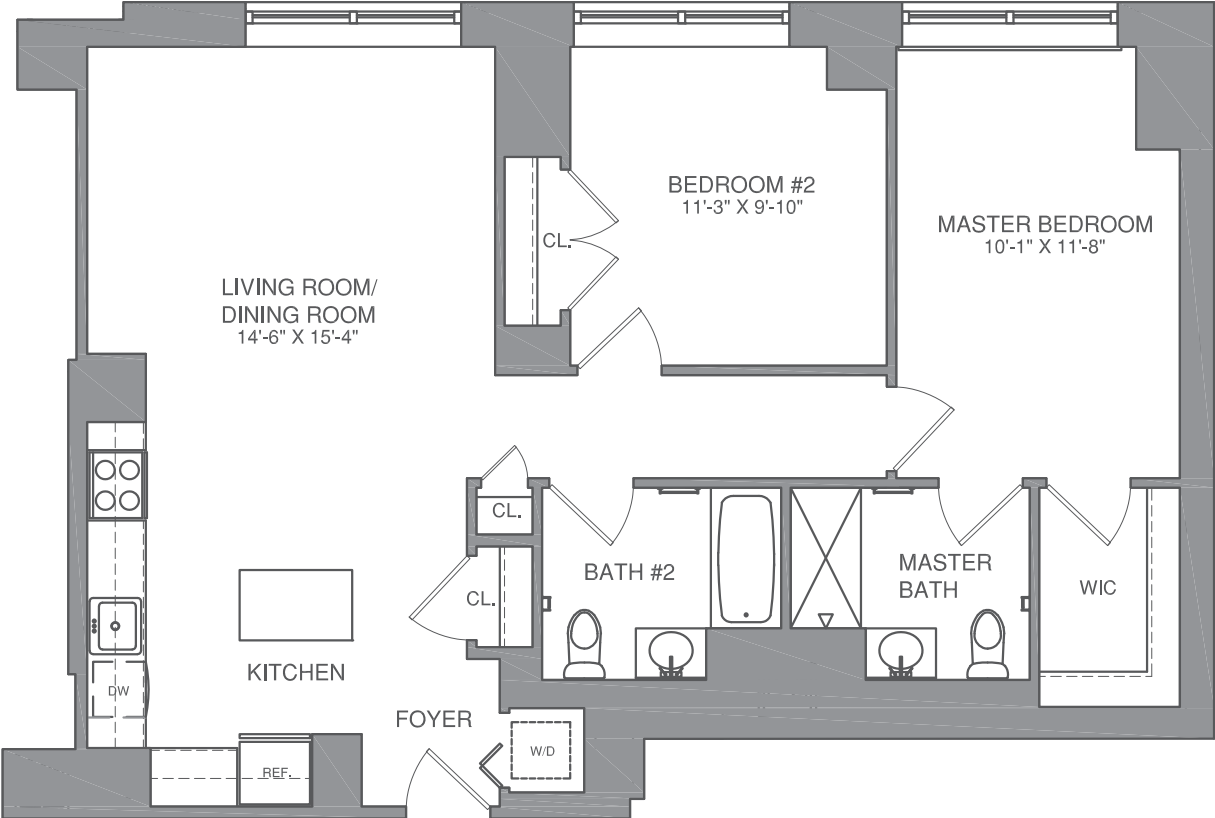


## B2

2 - bedroom | 2 - bath  
1,070 - 1,108 sq. ft.\*

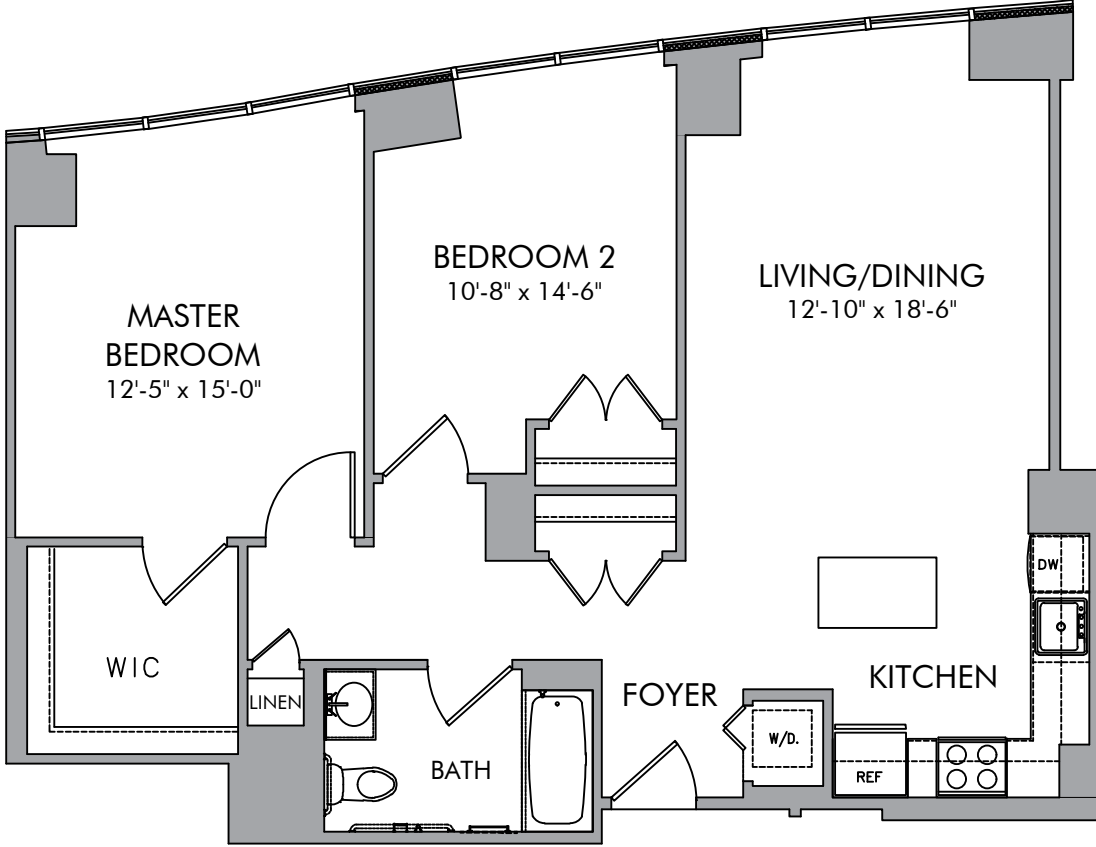
# 2 Bedroom

\*all square footage is approximate



## B3

2 - bedroom | 2 - bath  
1,103 - 1,104 sq. ft.\*



## B4

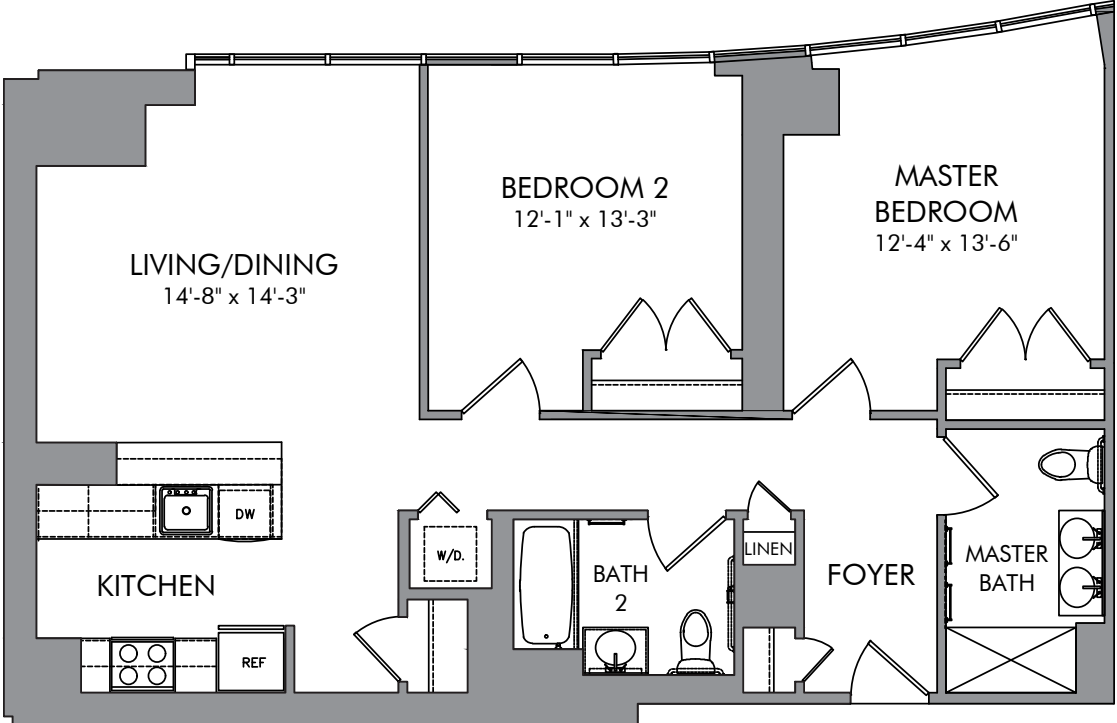
2 - bedroom | 1 - bath  
1,012 sq. ft.\*





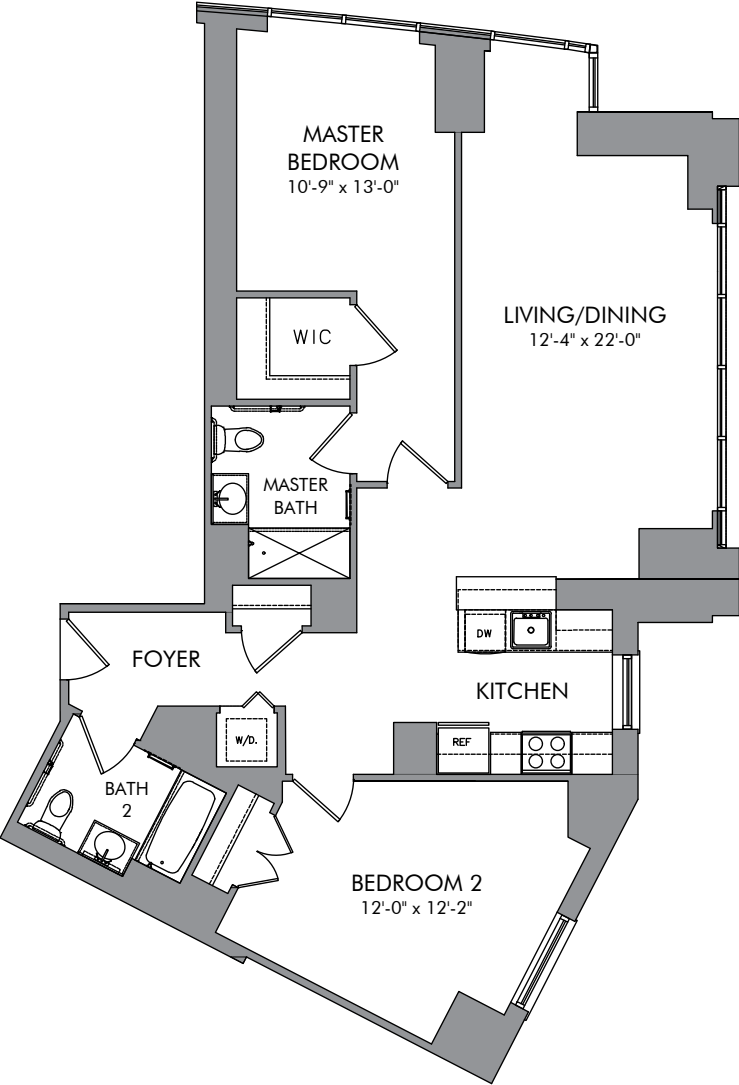
# 2 Bedroom

\*all square footage is approximate



**B5**

2 - bedroom | 2 - bath  
1,063 sq. ft.\*

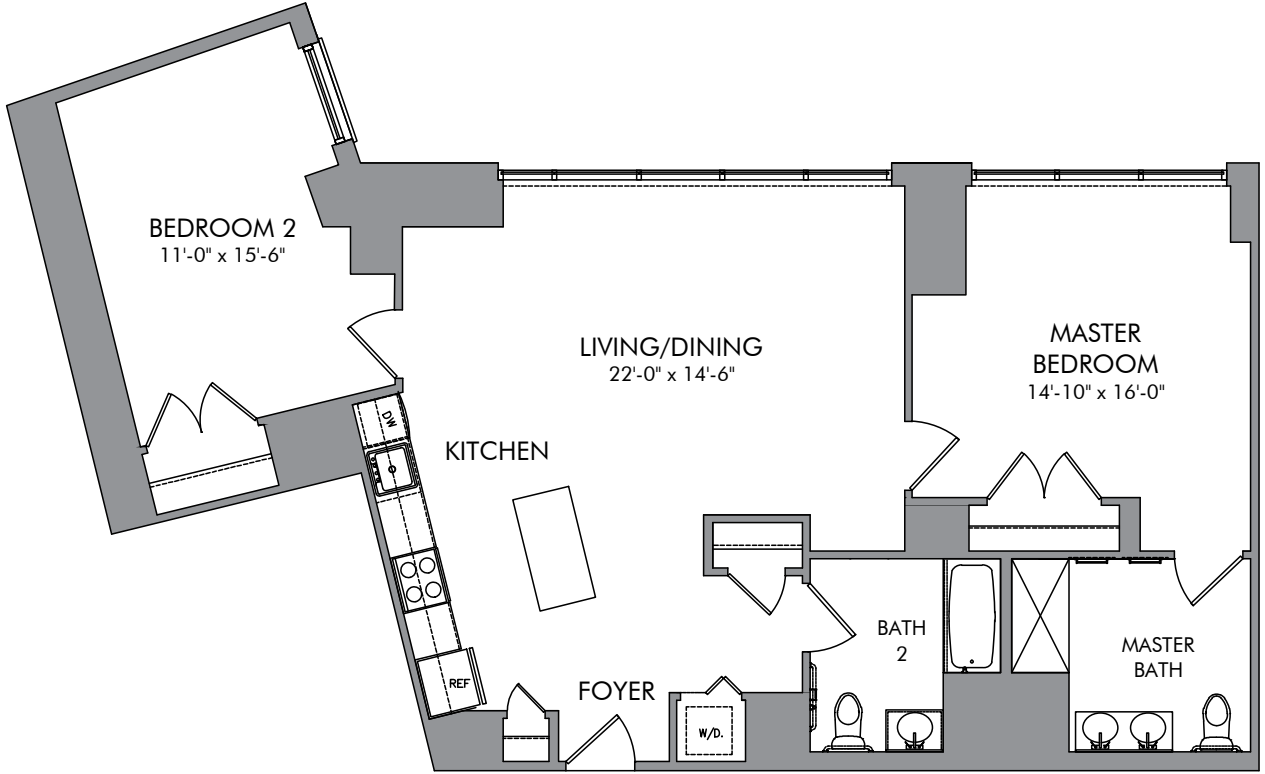


**B6**

2 - bedroom | 2 - bath  
1,211 sq. ft.\*

# 2 Bedroom

\*all square footage is approximate



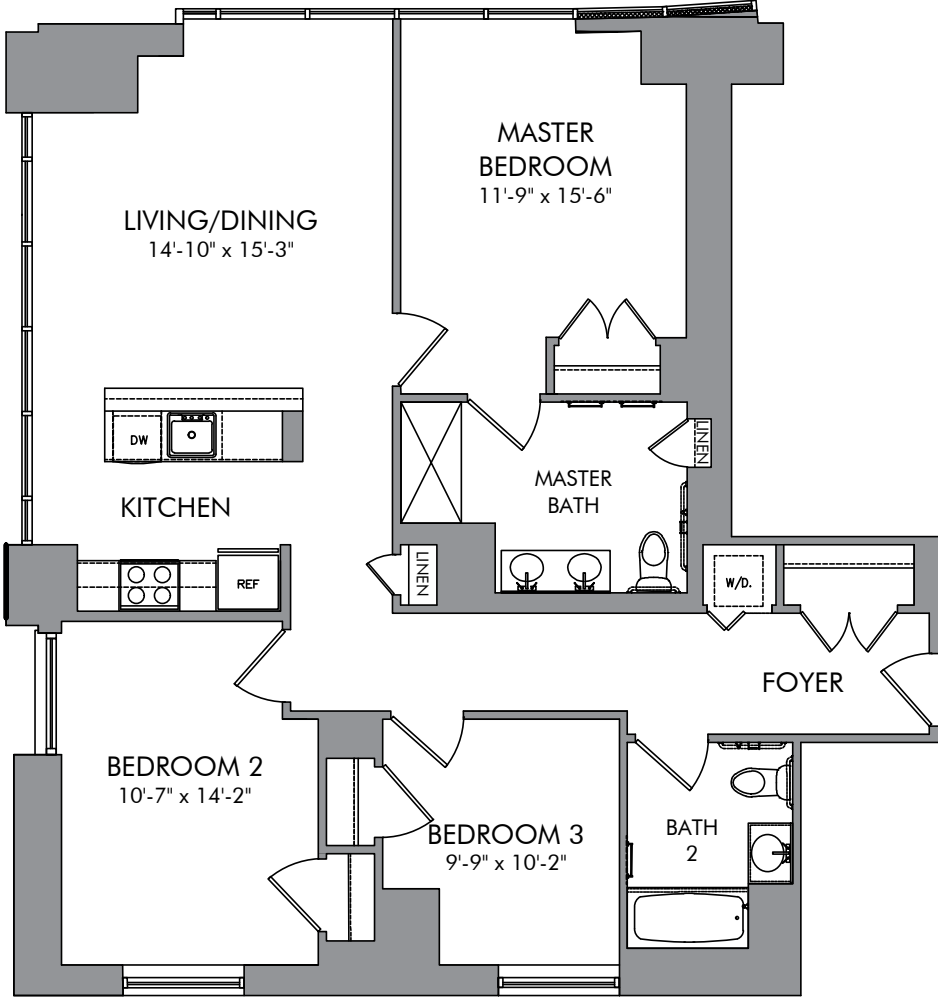
## B7

2 - bedroom | 2 - bath  
1,285 sq. ft.\*



# 3 Bedroom

\*all square footage is approximate



**C1A**

3 - bedroom | 2 - bath  
1,276 sq. ft.\*

